

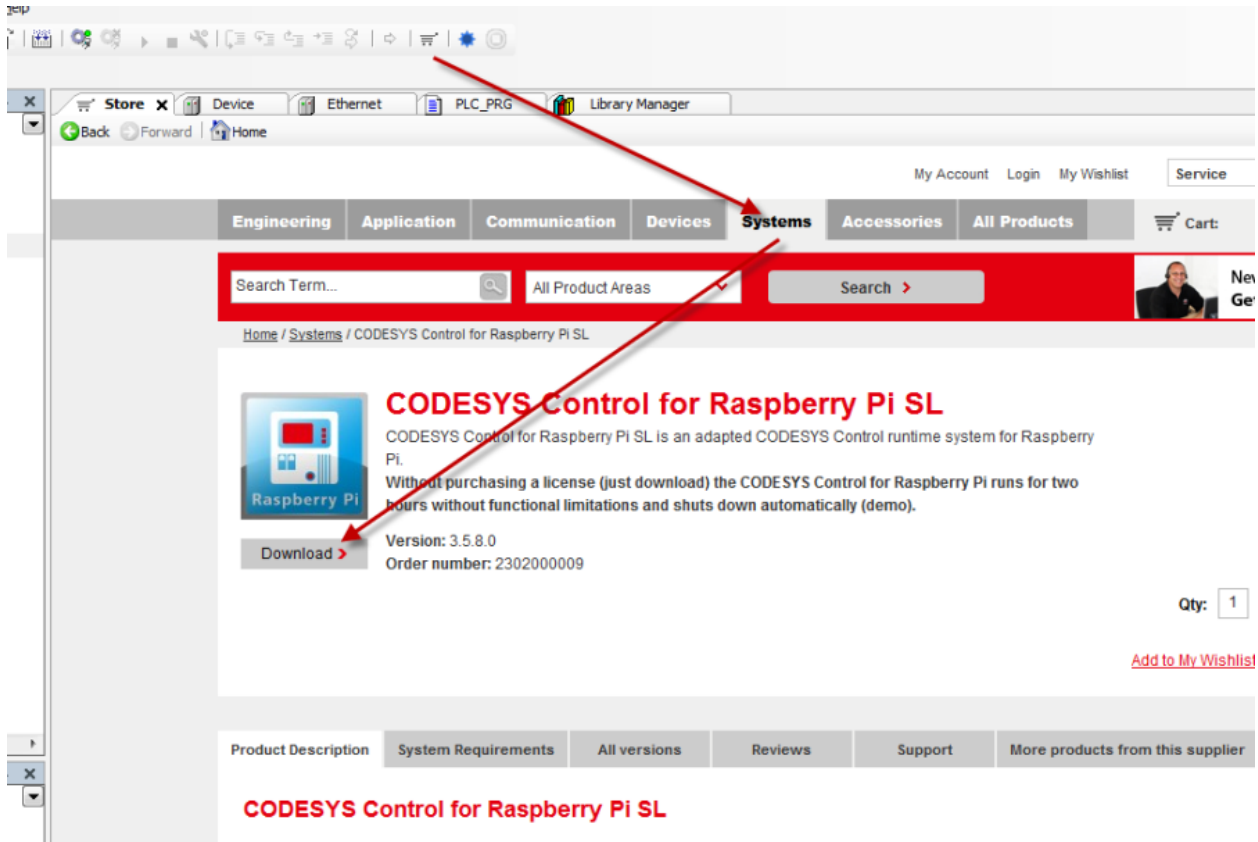
# Raspberry Pi: FAQ

You need the CODESYS programming environment version 3.5 in order to be able to use Raspberry. You can download this free of charge from the CODESYS store

<http://store.codesys.com/engineering/codesys.html>

Subsequently, you need the package *CODESYS Control for Raspberry Pi SL* from the CODESYS store, which you can then install directly via CODESYS ( *Tools Package Manager Install...*):

<https://store.codesys.com/codesys-control-for-raspberry-pi-sl.html>



Please restart CODESYS after installing this package.

## What needs to be installed on the Pi itself?

If you don't have an image, it can be downloaded from <http://www.raspberrypi.org/downloads>. You then have to flash it to the SD card.

Activation of SSH



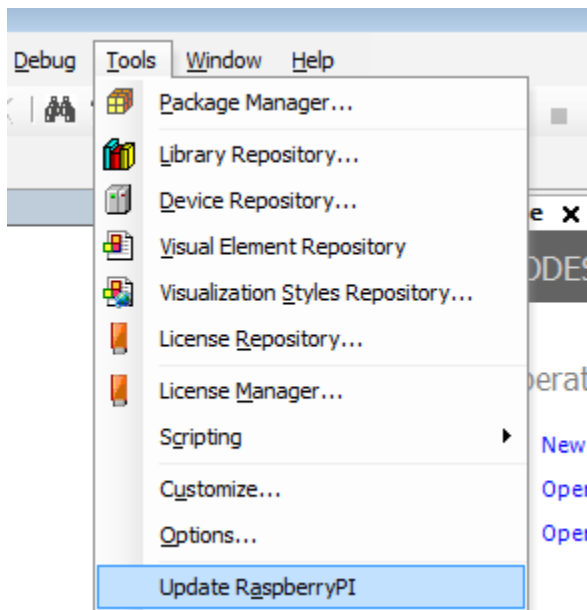
Activate SSH:


<https://www.raspberrypi.org/documentation/remote-access/ssh/>  
<http://forum.codesys.com/viewtopic.php?f=22&t=6345&p=12781#p12781>



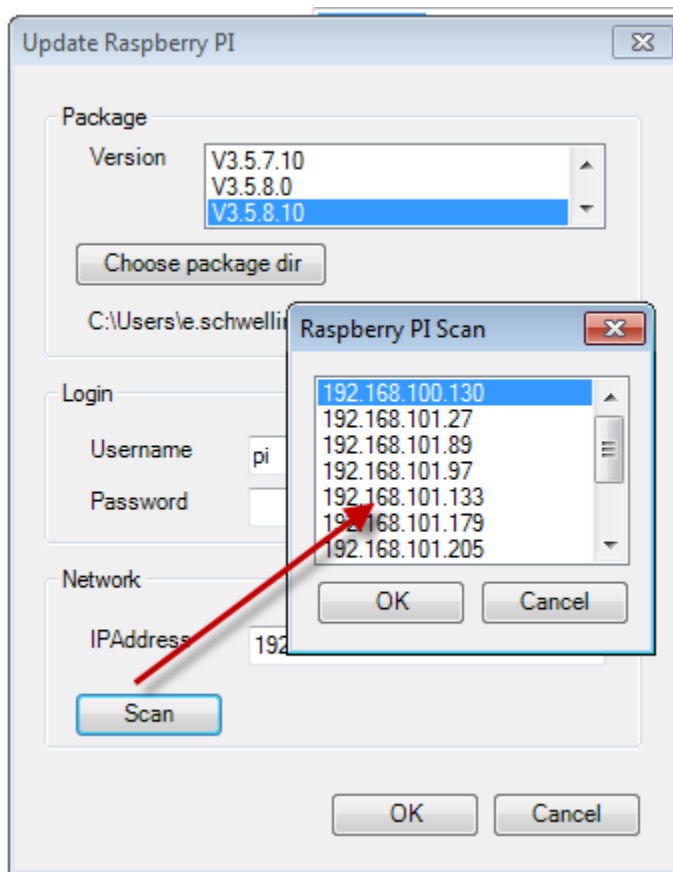
If you already use the Raspberry Pi for other things, you can of course continue to use your existing image.


The CODESYS PLC is installed via the following menu item:

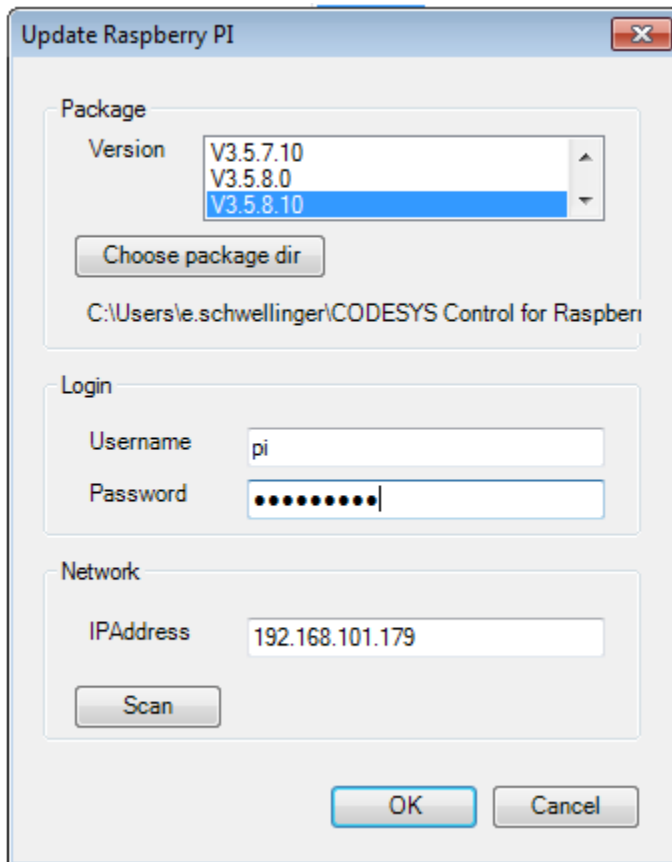


 The Raspberry Pi must be located in the same network as the CODESYS PC from which the installation is executed.

You can now scan the Raspberry Pi in your network. All the Raspberry Pi devices in this network appear in the scan.

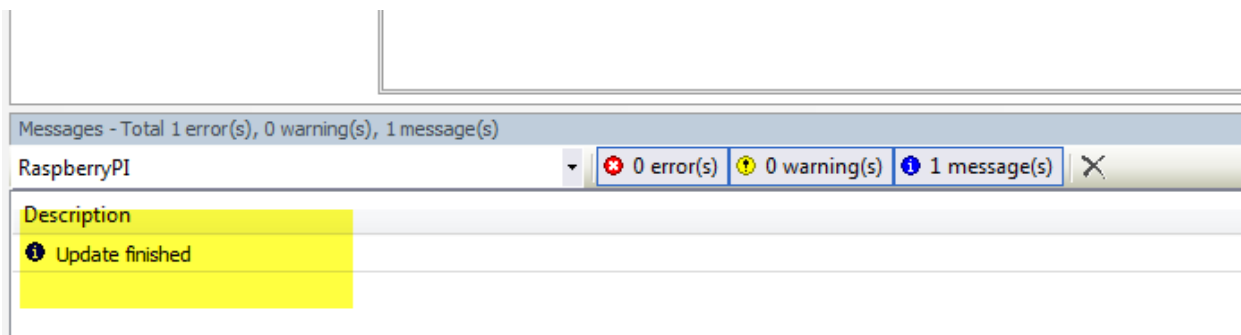


 Login data  
User name: **pi**  
Password: **raspberrypi**



The dialog box is titled "Update Raspberry PI" and contains three sections: "Package", "Login", and "Network". In the "Package" section, a "Version" dropdown menu shows "V3.5.7.10", "V3.5.8.0", and "V3.5.8.10" (which is selected). Below it is a "Choose package dir" button and a text field showing "C:\Users\l.e.schwellinger\CODESYS Control for Raspberri". The "Login" section has "Username" (pi) and "Password" (masked with dots). The "Network" section has an "IPAddress" (192.168.101.179) and a "Scan" button. At the bottom are "OK" and "Cancel" buttons.

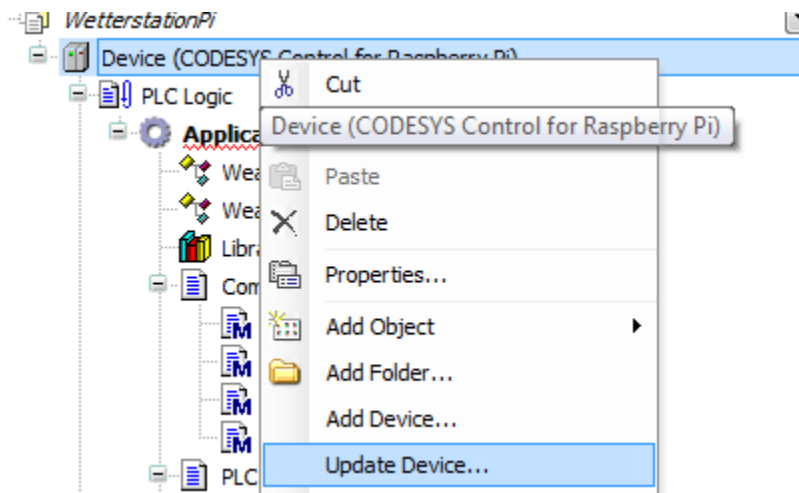
The Debian package from the store download is now installed on the Raspberry Pi and the PLC is also started directly. The message [Update finished](#) in the window [Messages -> RaspberryPI](#) indicates a successful installation.



After that you can use the Raspberry Pi directly with CODESYS. To do this, open one of the sample projects:

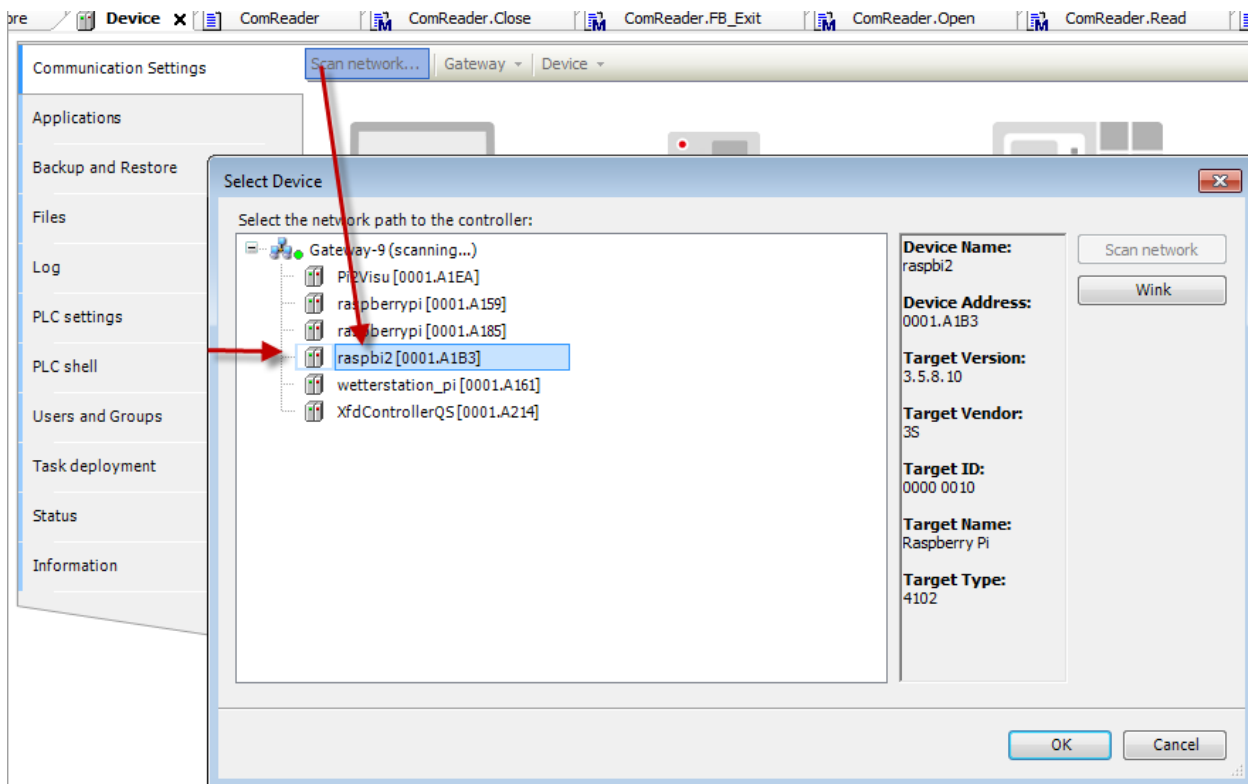
C:\Users\<user\_name>\CODESYS Control for Raspberry PI\<version>\Examples\Webvisu.project

Please update the device via the context menu (right mouse button) so that it matches the current PLC version on the Raspberry Pi.



Subsequently, set the *Compiler Version* and the *Visualization Profile* to the latest version via *Project Project Settings...*

Now you can scan the Raspberry Pi in CODESYS under the *Communication Settings* of the *Device*. Log in with *Online Login* and start the application with *Debug Start*.



When the webvisu project is running, you can call and display the webvisu of the project in a browser with the link [http://<raspberrypi\\_ip\\_address>:8080/webvisu.htm](http://<raspberrypi_ip_address>:8080/webvisu.htm).

**You can use the following fieldbuses / features with the Raspberry Pi:**

- EtherCAT master
- Profinet controller / Profinet device
- Modbus TCP / master, slave
- Modbus RTU / master, slave
- Ethernet/IP scanner and adapter
- CANopen over EL6751 gateway terminal

**Pi-specific features:**

- Address PiCAM from the PLC
- PiFace (8 inputs / 8 outputs via SPI)
- I2C
- Address GPIO
- Control RC servos via SoftMotion and PLCOpen function blocks
- further example for I2C – analog input / temperature measurement
- and much more...

Here is a first-steps video for this:

<https://www.youtube.com/watch?v=6FPf3RHWyeU>

Example – EtherCAT and SoftMotion:

[http://www.youtube.com/watch?v=GFN9T\\_cXLEU](http://www.youtube.com/watch?v=GFN9T_cXLEU)

Example – RC servos:

<http://www.youtube.com/watch?v=oDha-2y3pH4>

You can also get useful information from our forum: You can also find libraries and devices from other CODESYS Raspberry Pi users here:

<http://forum-de.codesys.com/viewforum.php?f=18&sid=372d536cd6b0615779d94f49e3d27d46>

<http://forum.codesys.com/viewforum.php?f=21&sid=847359a6c4f57dd5f6f63d96fbab291b>

The forum FAQ is also very helpful for this:

<http://forum.codesys.com/viewforum.php?f=22>