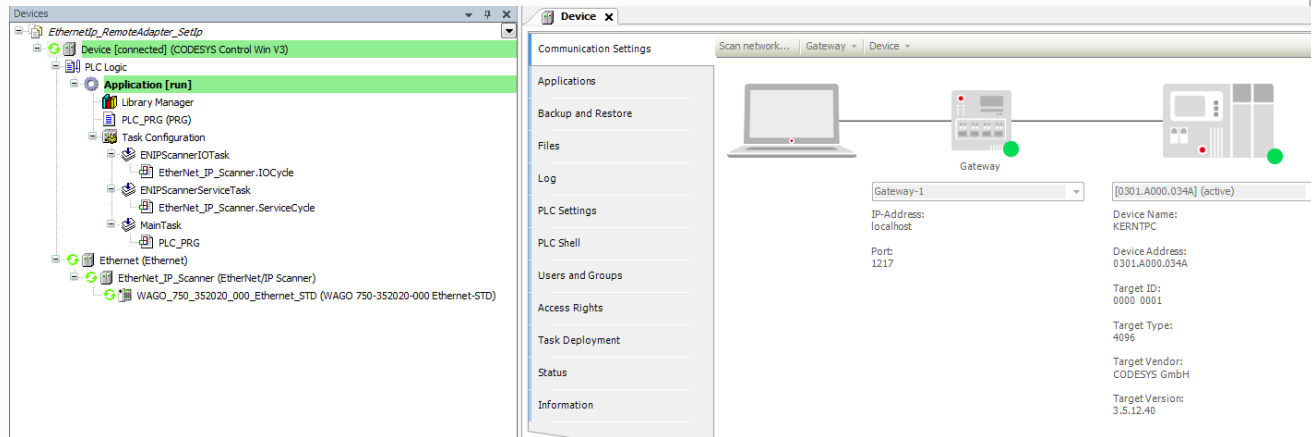


Ethernet/IP: Setting the IP Address of a Remote Adapter

- Establish a connection to the device that you want to link via Ethernet/IP. In this example, a Wago controller (Ethernet/IP adapter) is used again. The required steps are listed in this FAQ article:

[Connecting to a WAGO Fieldbus Coupler via Ethernet/IP \(IP scanner\)](#)

Your project should look like this:



- Adapt the POU `PLC_PRG` as follows:

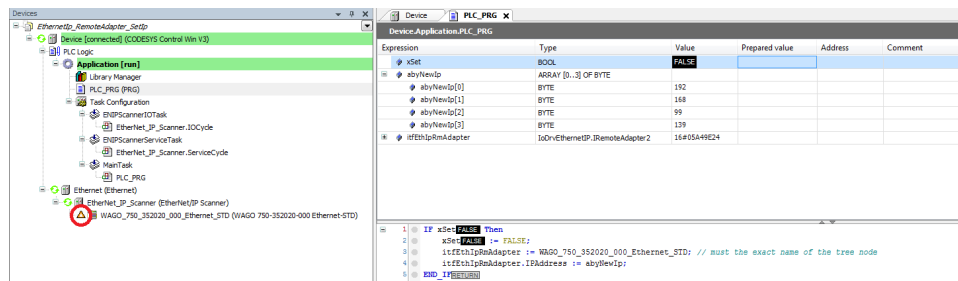
Declaration

```
VAR
    xSet                : BOOL;
    abyNewIp            : ARRAY [0..3] OF BYTE := [192, 168, 99, 139]; // = wrong IpAddr !!
    itfEthIpRmAdapter   : IoDrvEthernetIP.IRemoteAdapter2;
END_VAR
```

Implementation

```
IF xSet Then
    xSet := FALSE;
    itfEthIpRmAdapter := WAGO_750_352020_000_Ethernet_STD; // must be the exact name of the tree node
    itfEthIpRmAdapter.IpAddress := abyNewIp;
END_IF
```

- Download the modified project to the controller.
- By setting the variable, the incorrect IP address is sent to the remote adapter and its connection is lost.



When the correct IP address is sent, the connection to the Ethernet/IP adapter is reestablished.

