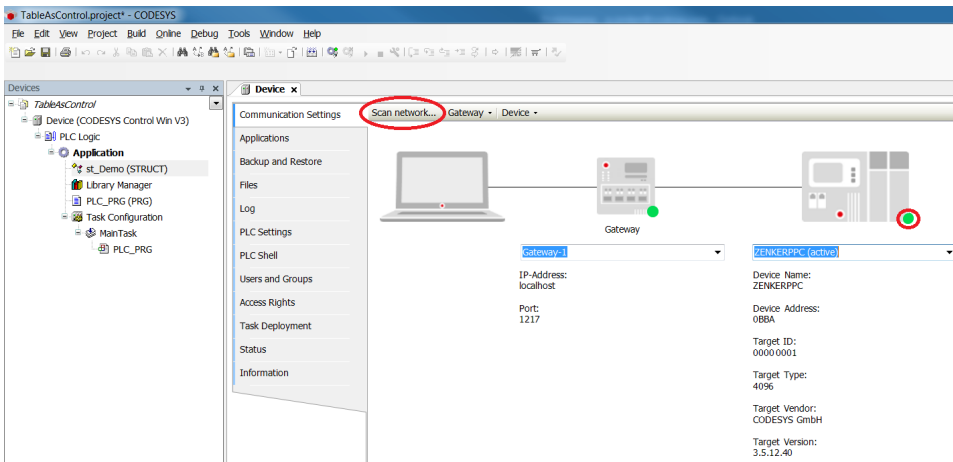
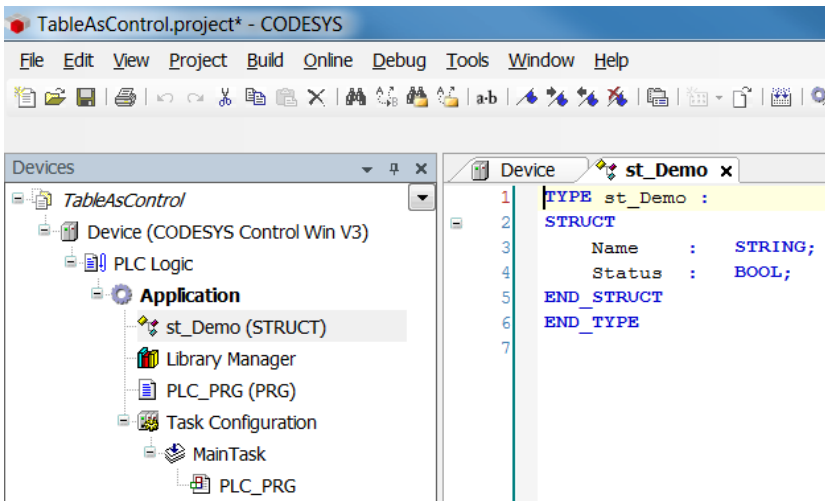


Visu: Using a Table as an Input Element

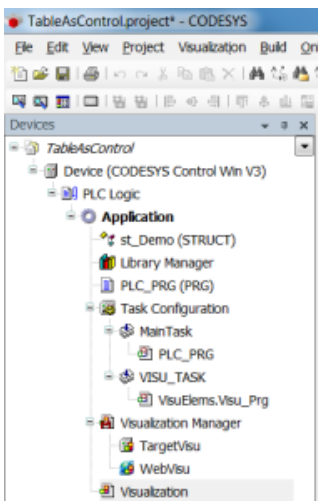
- Create a "Standard project" and select *CODESYS Control Win V3* as the device.
- Define the target system by means of the *Network scan*.



- Create a structure named *st_Demo*. with the elements *Name* and *Status*:



- Insert a visualization in the device tree.
Then the *Visualization Manager* is inserted with the visu types *TargetVisu* and *WebVisu*.
In addition, a *VISU_TASK* is also created automatically.



- Adapt the POU *PLC_PRG* as follows:

Declaration

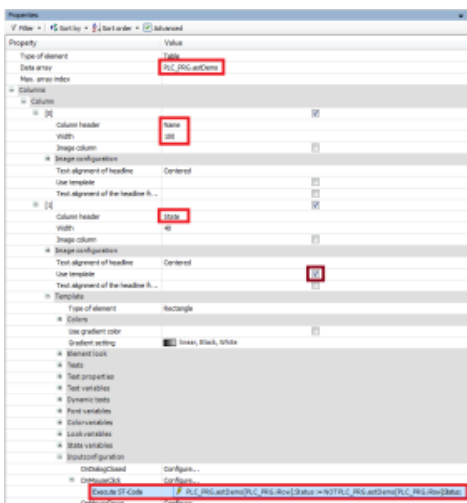
```
VAR
    astDemo      :      ARRAY [0..2] OF st_DEMO := [(Name := 'Item 1', Status := FALSE),
                                                    (Name := 'Item 2', Status := FALSE),
                                                    (Name := 'Item 3', Status := FALSE)];

    iRow         :      INT;
END_VAR
```

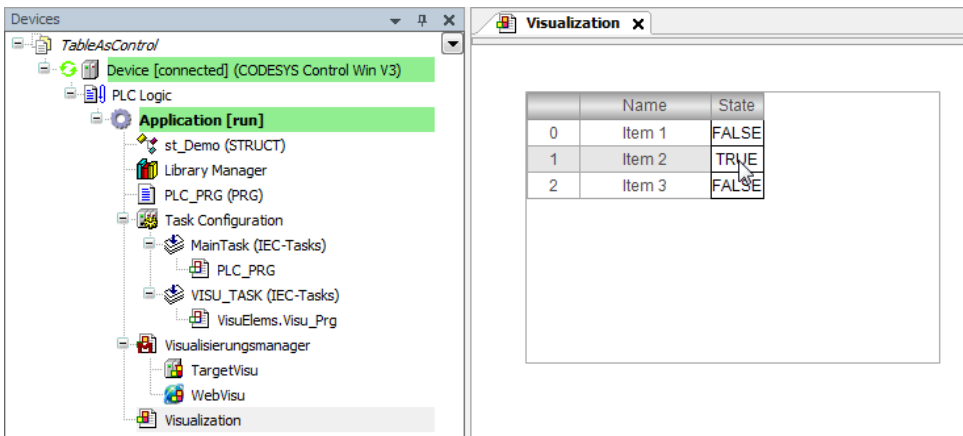
Implementation

```
// no implementation
```

- In the *Visualization*, set an element of type *Table* and configure the element as follows:

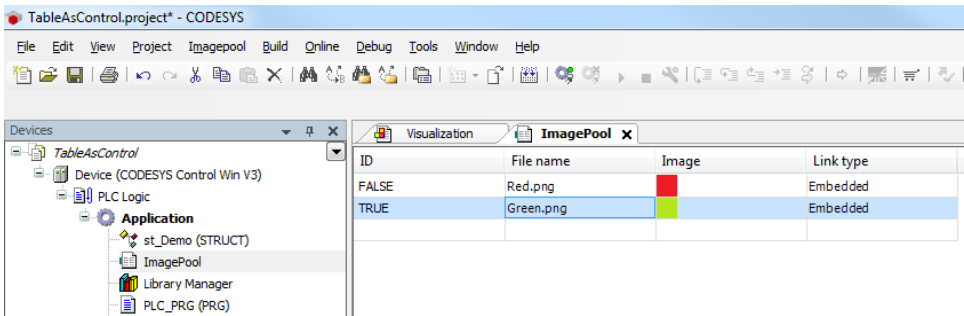


- Start the project and open the internal visualization. The value is negated by clicking the corresponding cell in the *Status* column:

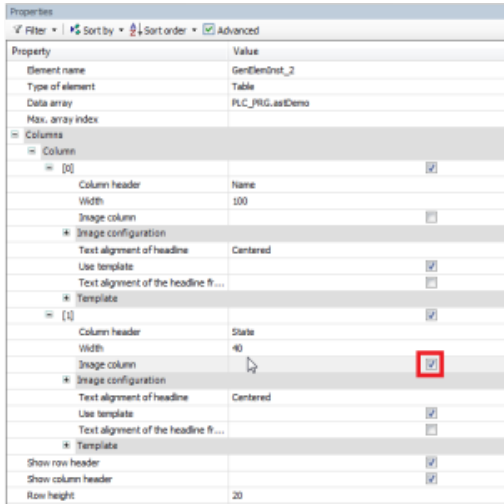


As an extension, the texts replaced by symbols as follows:

- Insert an *Image pool* and configure it as follows:



- Adapt the *Table* image element as follows:



- Download the change to the controller.

