

# Debugging a Visu Exception

How to debugging a Visu Exception if there is an Visu exception shown in the Visualization:

**An exception happened while executing the visualization!**

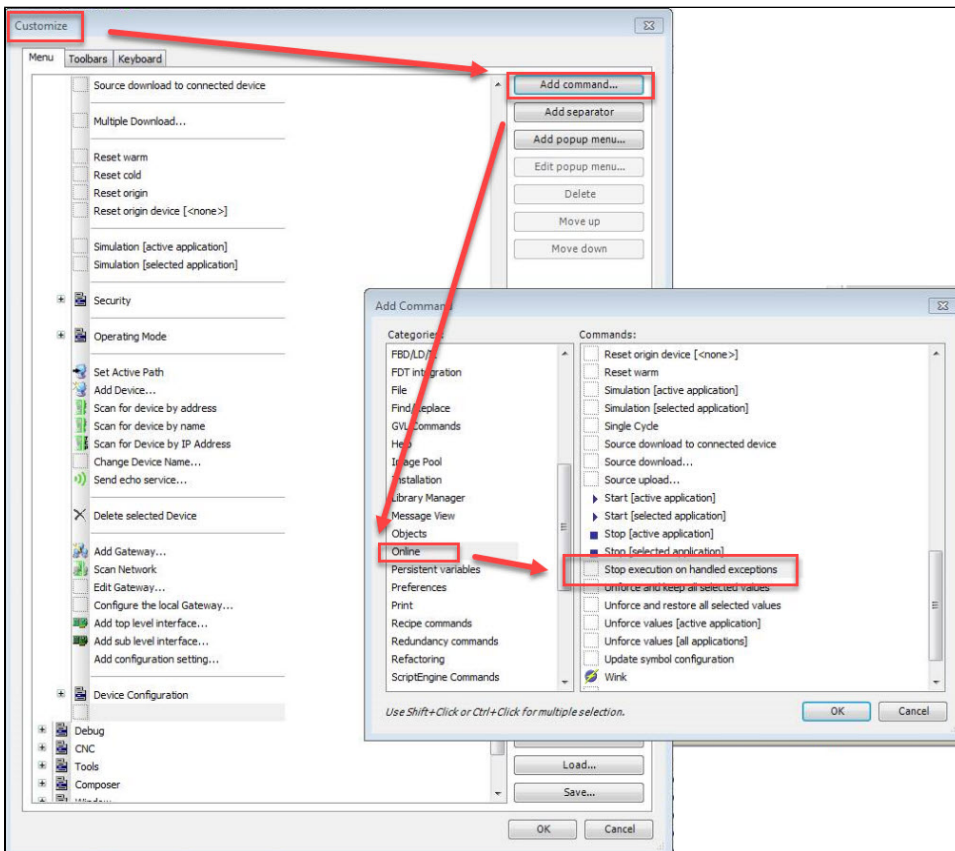
**If you want to debug the reason of this crash, activate the online-command 'Stop execution on handled exceptions' within your programming system.**

**Please press a key or touch/mouse to try to restart the visualization.**

## Step-by-step guide

Use the following Option:

1. **Execute Tools -> Customize - 'Add command..'- Category „Online“ - *Stop execution on handled exception***

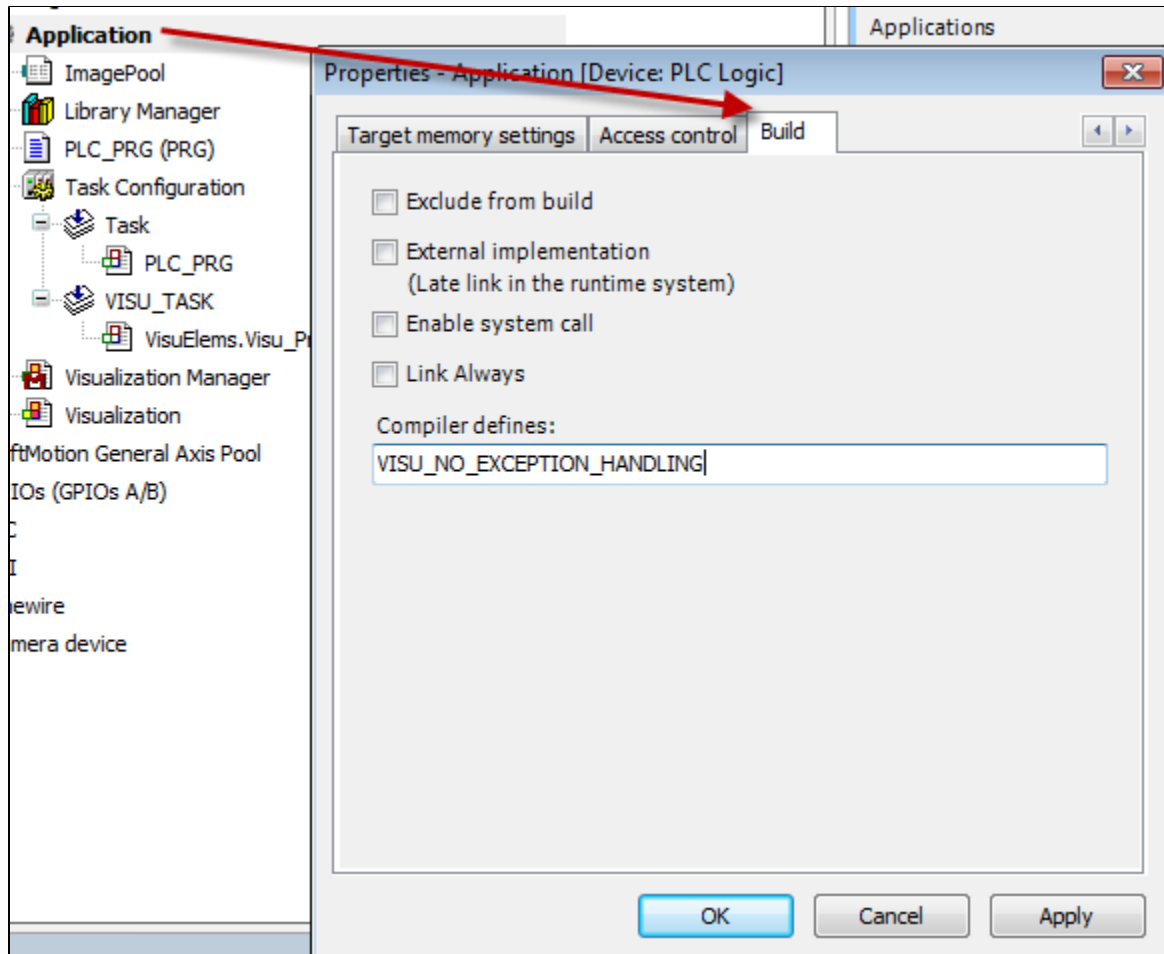


If then the exception occurs, the IEC code where this happens can be analyzed (see also OLH: [PLC Log](#)).

When an Exception error occurs from one of the CODESYS visualization elements, please set the *compiler-define*:

**VISU\_NO\_EXCEPTION\_HANDLING**

and send a full project archive, with the associated *Callstack* and a [Core Dump](#), created at the time of the crash:



(See also the FAQ: [Report problems and error messages to CODESYS - For reporting a runtime exception](#))

More detailed information can be found under [Debugging a Visu Exception](#).

 If you need technical support, please purchase a [Support Ticket](#) in the CODESYS Store.

- Please note that certain products in the CODESYS Store already include a Support Ticket.
- More detailed information will be given to you when you buy the products or will be sent to the purchaser and can be accessed there.

Also, if you have a question concerning the products in the CODESYS Store, or you want to report **software bugs**, click on the ["My Question"](#) button next to the shopping cart symbol in the [CODESYS Store](#).

#### See also....

- Our [Codesys Online Help \(OLH\)](#) Website
- OLH [Diagnosis on Visualization Crashes](#)
- OLH: How to '[Analyzing Errors with Core Dump](#)' and how to '[Create a Core Dump](#)' in the first place
- OLH: the [PLC Log](#) and how to [Reading the PLC Log](#)
- How to [Report problems and error messages to CODESYS](#)